

**5V 供电、失效保护RS-422收发器****UM13087S8 SOP8****描述**

UM13087S8是具有±8kV ESD保护的高速 RS-422收发器，该器件包含一个驱动器和一个接收器。UM13087S8具有失效保护电路，可在接收器输入开路或短路时确保接收器输出为逻辑高电平。这意味着如果端接总线上的所有发射器都被禁用（高阻抗），接收器输出将为逻辑高电平。UM13087S8允许的传输速率高达10Mbps，具有增强型ESD保护。所有发射器输出和接收器输入均能耐受±8kV的人体放电模型。

UM13087S8具有1/8单位负载接收器输入阻抗，支持总线连接多达256个节点。UM13087S8适用于全双工通信。

**应用**

- RS-422 通信
- 电平转换器
- 适用于 EMI 敏感应用的收发器
- 工业控制局域网

**特性**

- RS-422 I/O 引脚提供 ESD 保护
  - ±8kV，人体放电模型
- 真正的失效保护接收器，同时符合 EIA/TIA-422 标准
- 最大数据速率高达 10Mbps
- 无误码数据传输
- 支持总线连接多达 256 个节点

**选型指南**

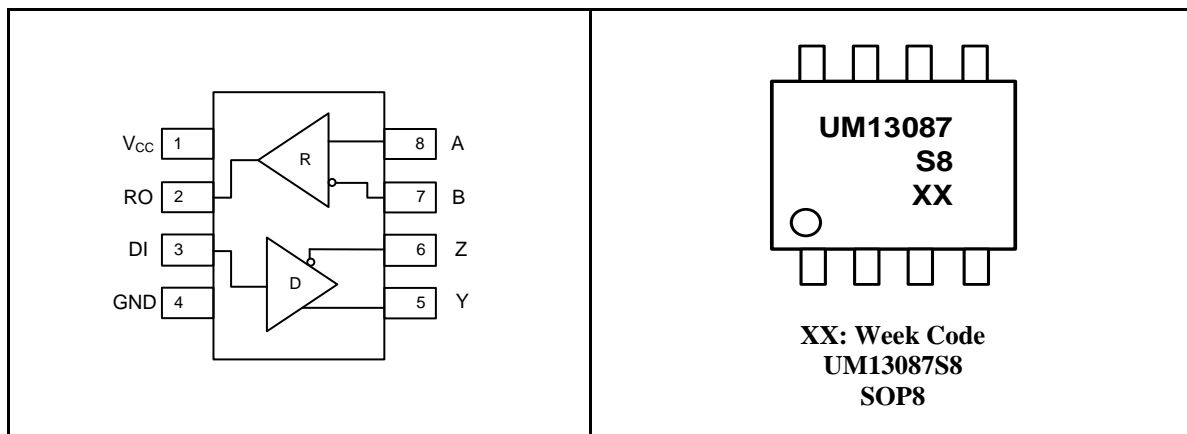
Part Number	Half/Full Duplex	Data Rate (Mbps)	Slew-Rate Limited	Low-Power Shutdown	Receiver/Driver Enable	Transceivers On Bus	Pin Count
UM13087S8	full	10	No	No	No	256	8

**订购信息**

Part Number	Temperature Range	Packaging Type	Shipping Qty
UM13087S8	-40 °C to +85 °C	SOP8	3000pcs/13 Inch Tape & Reel

## Pin Configurations

## Top View



## Absolute Maximum Ratings

Symbol	Parameter	Value	Unit
V <sub>CC</sub>	Supply Voltage	6	V
	Driver Input Voltage (DI)	-0.3V to (V <sub>CC</sub> + 0.3V)	V
	Driver Output Voltage (Y, Z)	-7.5 to +12.5	V
	Receiver Input Voltage (A, B)	-7.5 to +12.5	V
	Receiver Output Voltage (RO)	-0.3V to (V <sub>CC</sub> + 0.3V)	V
P <sub>D</sub>	8-Pin SO (derate 9.09mW/ °C above +70 °C)	520	mW
T <sub>A</sub>	Ambient Temperature	-40 to +85	°C
T <sub>J</sub>	Junction Temperature	-40 to +150	°C
T <sub>STG</sub>	Storage Temperature Range	-65 to +150	°C
T <sub>L</sub>	Lead Temperature for Soldering 10 seconds	+300	°C

## Thermal Information

Symbol	Thermal Metric		Value	UNIT
R <sub>θJA</sub>	Junction to Ambient Thermal Resistance	SOP8	110	°C/W
R <sub>θJC</sub>	Junction to Case Thermal Resistance	SOP8	54	

**DC Electrical Characteristics**

( $V_{CC} = 5V \pm 5\%$ ,  $T_A = T_{MIN}$  to  $T_{MAX}$ , unless otherwise noted. Typical values are at  $V_{CC} = 5V$  and  $T_A = +25\text{ }^{\circ}\text{C}$ .) (Note 1)

Parameter	Symbol	Test Conditions	Min	Typ	Max	Unit
<b>DRIVER</b>						
Differential Driver Output	$V_{OD1}$	Figure 3, No Load			$V_{CC}$	V
Differential Driver Output	$V_{OD2}$	Figure 3, $R = 50\Omega$	2.0		$V_{CC}$	V
Differential Driver Output	$V_{OD3}$	Figure 3, $R = 27\Omega$	1.5		$V_{CC}$	V
Change-in-Magnitude of Differential Output Voltage (Note 2)	$\Delta V_{OD}$	Figure 3, $R = 50\Omega$			0.2	V
Driver Common-Mode Output Voltage	$V_{OC}$	Figure 3, $R = 50\Omega$			3.0	V
Input High Voltage	$V_{IH}$	DI	0.7 $V_{CC}$			V
Input Low Voltage	$V_{IL}$	DI			0.3 $V_{CC}$	V
DI Input Hysteresis	$V_{HYS}$			100		mV
Driver Short-Circuit Output Current (Note 3)	$I_{OSD}$	$-7V \leq V_{OUT} \leq 12V$	-550		550	mA
<b>RECEIVER</b>						
Input Current (A and B)	$I_{IN}$	$V_{IN} = 12V$			125	$\mu A$
		$V_{IN} = -7V$			-75	
Receiver Differential Threshold Voltage	$V_{TH}$	$-7V \leq V_{CM} \leq 12V$	-200	-125	-50	mV
Receiver Input Hysteresis	$\Delta V_{TH}$			25		mV
Receiver Output High Voltage	$V_{OH}$	$I_O = -4mA$ , $V_{ID} = -50mV$	4			V
Receiver Output Low Voltage	$V_{OL}$	$I_O = 4mA$ , $V_{ID} = -200mV$			0.4	V
Receiver Input Resistance	$R_{IN}$	$-7V \leq V_{CM} \leq 12V$	96			k $\Omega$
Receiver Output Short Circuit Current	$I_{OSR}$	$0V \leq V_{RO} \leq V_{CC}$	7		95	mA
<b>SUPPLY CURRENT</b>						
Supply Current	$I_{CC}$	No load, DI=GND or $V_{CC}$		600	900	$\mu A$
ESD Protection for Y, Z, A, B		Human Body Model		$\pm 8$		kV

**Note 1:** All currents into the device are positive; all currents out of the device are negative. All

voltages are referred to device ground unless otherwise noted.

**Note 2:**  $\Delta V_{OD}$  and  $\Delta V_{OC}$  are the changes in  $V_{OD}$  and  $V_{OC}$ , respectively, when the DI input changes state.

**Note 3:** Maximum current level applies to peak current just prior to foldback-current limiting; minimum current level applies during current limiting.

### Switching Characteristics

( $V_{CC} = 5V \pm 5\%$ ,  $T_A = T_{MIN}$  to  $T_{MAX}$ , unless otherwise noted. Typical values are at  $V_{CC} = 5V$  and  $T_A = +25^\circ C$ .)

Parameter	Symbol	Test Conditions	Min	Typ	Max	Unit
Driver Input-to-Output	$t_{DPLH}$	Figures 4 and 5, $R_{DIFF} = 54\Omega$ , $C_{L1} = C_{L2} = 100pF$		25	60	ns
	$t_{DPHL}$			25	60	
Driver Output Skew $ t_{DPLH} - t_{DPHL} $	$t_{DSKEW}$	Figures 4 and 5, $R_{DIFF} = 54\Omega$ , $C_{L1} = C_{L2} = 100pF$		5	20	ns
Driver Rise or Fall Time	$t_{DR}, t_{DF}$	Figures 4 and 5, $R_{DIFF} = 54\Omega$ , $C_{L1} = C_{L2} = 100pF$		10	20	ns
Maximum Data Rate	$f_{MAX}$			10		Mbps
Receiver Input to Output	$t_{RPLH}, t_{RPHL}$	Figures 6 and 7; $ V_{ID}  \geq 2.0V$ ; rise and fall time of $V_{ID} \leq 15ns$	20	100	180	ns
$ t_{RPLH} - t_{RPHL} $ Differential Receiver Skew	$t_{RSKD}$	Figures 6 and 7; $ V_{ID}  \geq 2.0V$ ; rise and fall time of $V_{ID} \leq 15ns$		10	30	ns

### Pin Description

Pin Number	Symbol	Function
1	VCC	Power Supply
2	RO	Receiver Output. if $A - B \geq -50mV$ , RO will be high; if $A - B \leq -200mV$ , RO will be low
3	DI	Driver Input, a low on DI forces Y low and Z high. Similarly, a high on DI forces Y high and Z low
4	GND	Ground
5	Y	Non-inverting Driver Output
6	Z	Inverting Driver Output
7	B	Inverting Receiver Input
8	A	Non-inverting Receiver Input

## Typical Operating Circuit

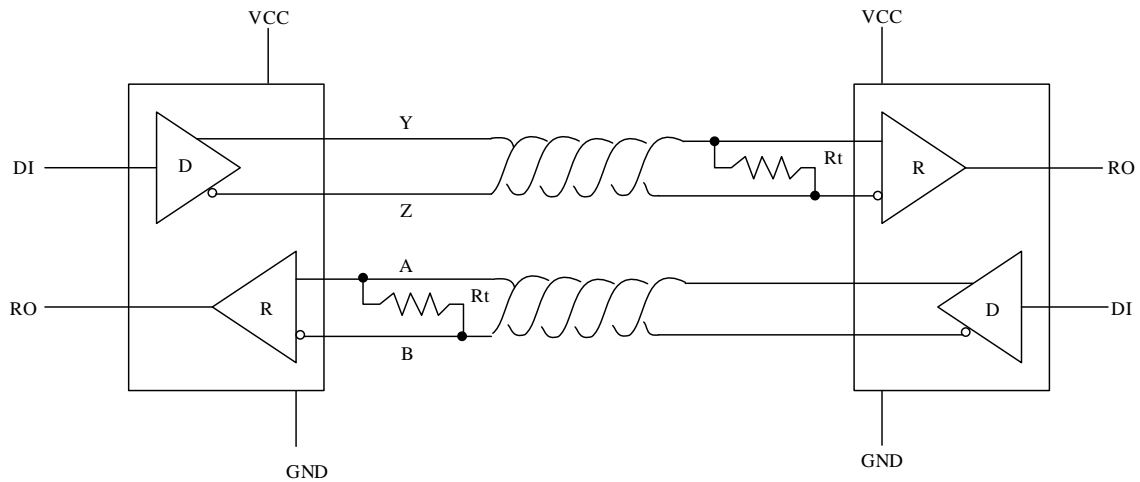


Figure 1: UM13087S8 pin configuration and typical full-duplex operating circuit

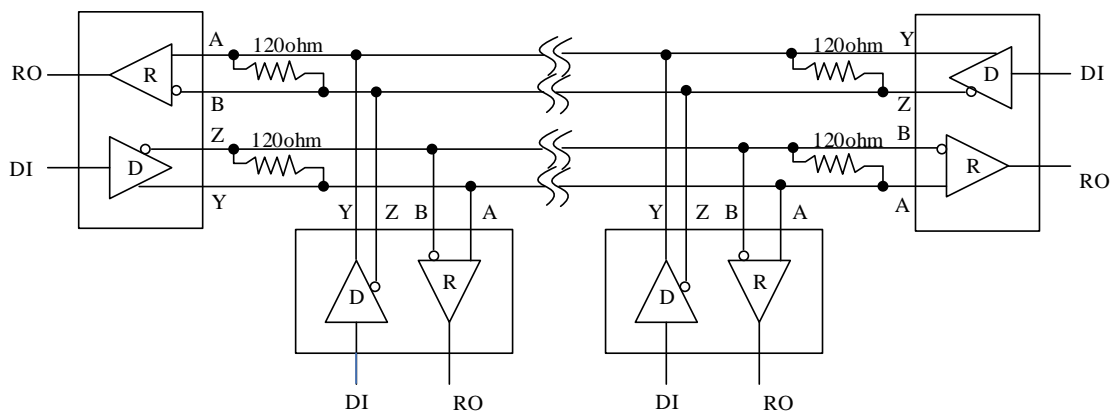


Figure 2: Typical Full-Duplex RS-422 Network

## Detailed Description

The UM13087S8 high-speed transceivers for RS-422 communication contain one driver and one receiver. The device features fail-safe circuitry, which guarantees a logic-high receiver output when the receiver inputs are open or shorted, or when they are connected to a terminated transmission line with all drivers disabled.

The UM13087S8 is full-duplex transceiver. It operates from a single 5V supply. Drivers are output short-circuit current limited. Thermal shutdown circuitry protects drivers against excessive power dissipation. When activated, the thermal shutdown circuitry places the driver outputs into a high-impedance state.

## Receiver Input Filtering

The receivers of the UM13087S8 incorporate input filtering in addition to input hysteresis. This filtering enhances noise immunity with differential signals that have very slow rise and fall times. Receiver propagation delay increases by 20% due to this filtering.

## Fail-Safe

The UM13087S8 guarantees a logic-high receiver output when the receiver inputs are shorted or open, or when they are connected to a terminated transmission line with all drivers disabled. This is done by setting the receiver threshold between -50mV and -200mV. If the differential receiver input voltage (A-B) is greater than or equal to -50mV, RO is logic high. If A-B is less than or equal to -200mV, RO is logic low. In the case of a terminated bus with all transmitters disabled, the receiver's differential input voltage is pulled to 0V by the termination. With the receiver thresholds of the UM13087S8, this results in a logic high with a 50mV minimum noise margin. Unlike previous fail-safe devices, the -50mV to -200mV threshold complies with the  $\pm 200\text{mV}$  EIA/TIA-422 standard.

## $\pm 8\text{kV}$ ESD Protection

As with all Union devices, ESD-protection structures are incorporated on all pins to protect against electrostatic discharges encountered during handling and assembly. The driver outputs and receiver inputs of the UM13087S8 have extra protection against static electricity. Union's engineers have developed state-of-the-art structures to protect these pins against ESD of  $\pm 8\text{kV}$  without damage.

The ESD-protected pins are tested with reference to the ground pin in a powered-down condition. They are tested to  $\pm 8\text{kV}$  using the Human Body Model.

## Test Circuit

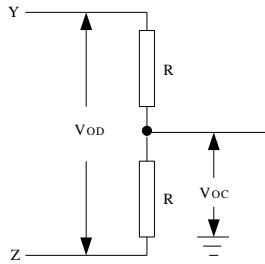


Figure 3. Driver DC Test Load

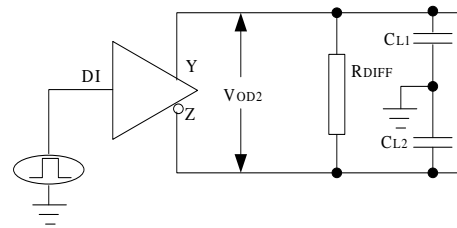


Figure 4. Driver Timing Test Circuit

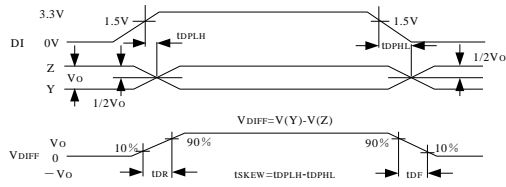


Figure 5. Driver Propagation Delays

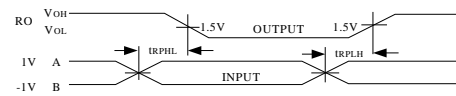


Figure 6. Receiver Propagation Delays

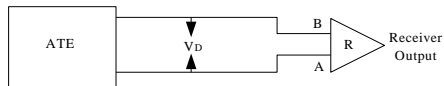


Figure 7. Receiver Propagation Delay Test Circuit

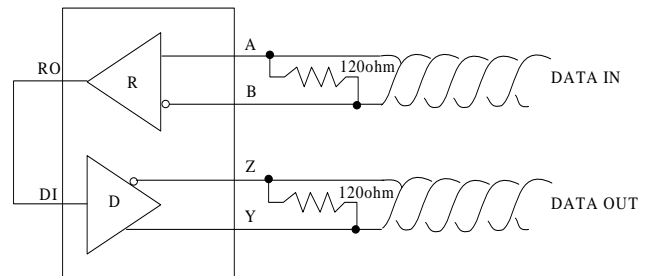


Figure 8: Line Repeater

---

**Applications Information****256 Transceivers on the Bus**

The standard RS-422 receiver input impedance is 12k $\Omega$  (one-unit load), and the standard driver can drive up to 32 unit loads. The UM13087S8 has a 1/8-unit-load receiver input impedance (96k $\Omega$ ), allowing up to 256 transceivers to be connected in parallel on one communication line. Any combination of these devices and/or other RS-422 transceivers with a total of 32 unit loads or less can be connected to the line.

**Driver Output Protection**

Two mechanisms prevent excessive output current and power dissipation caused by faults or by bus contention. The first, a foldback current limit on the output stage, provides immediate protection against short circuits over the whole common-mode voltage range. The second, a thermal shutdown circuit, forces the driver outputs into a high-impedance state if the die temperature becomes excessive.

**Line Length vs. Data Rate**

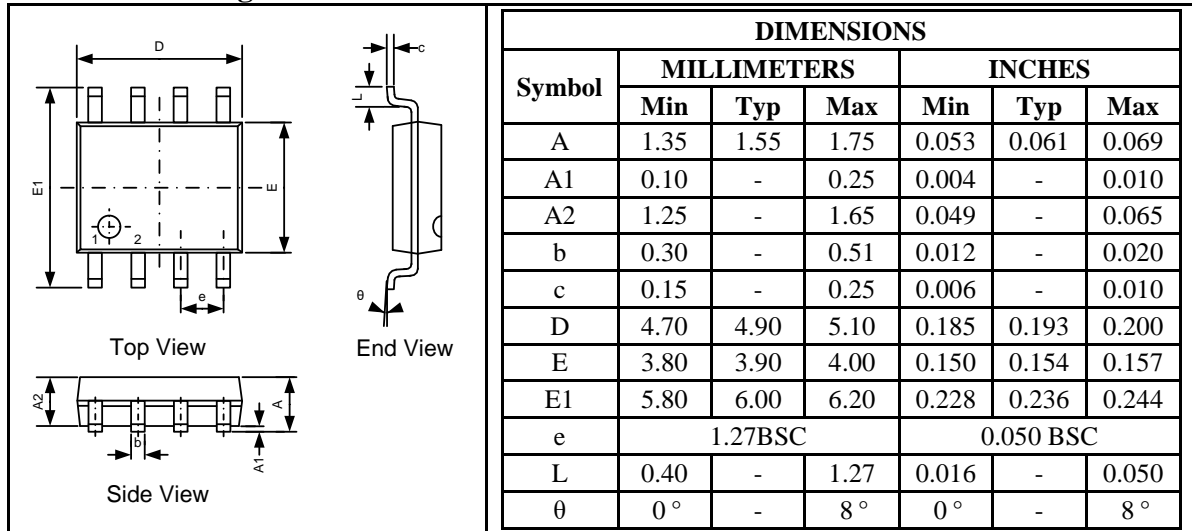
The RS-422 standard covers line lengths up to 4000 feet. For line lengths greater than 4000 feet, use the repeater application shown in Figure 8.



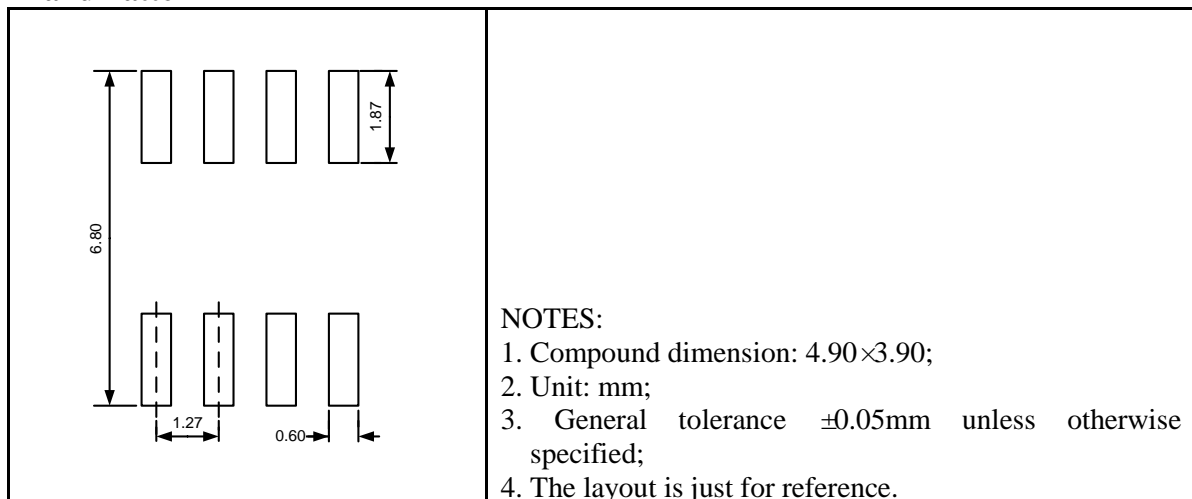
## Package Information

### UM13087S8 SOP8

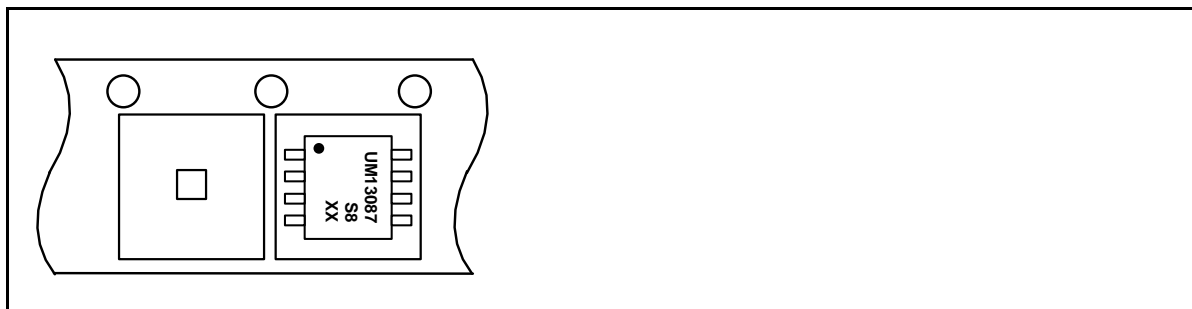
#### Outline Drawing

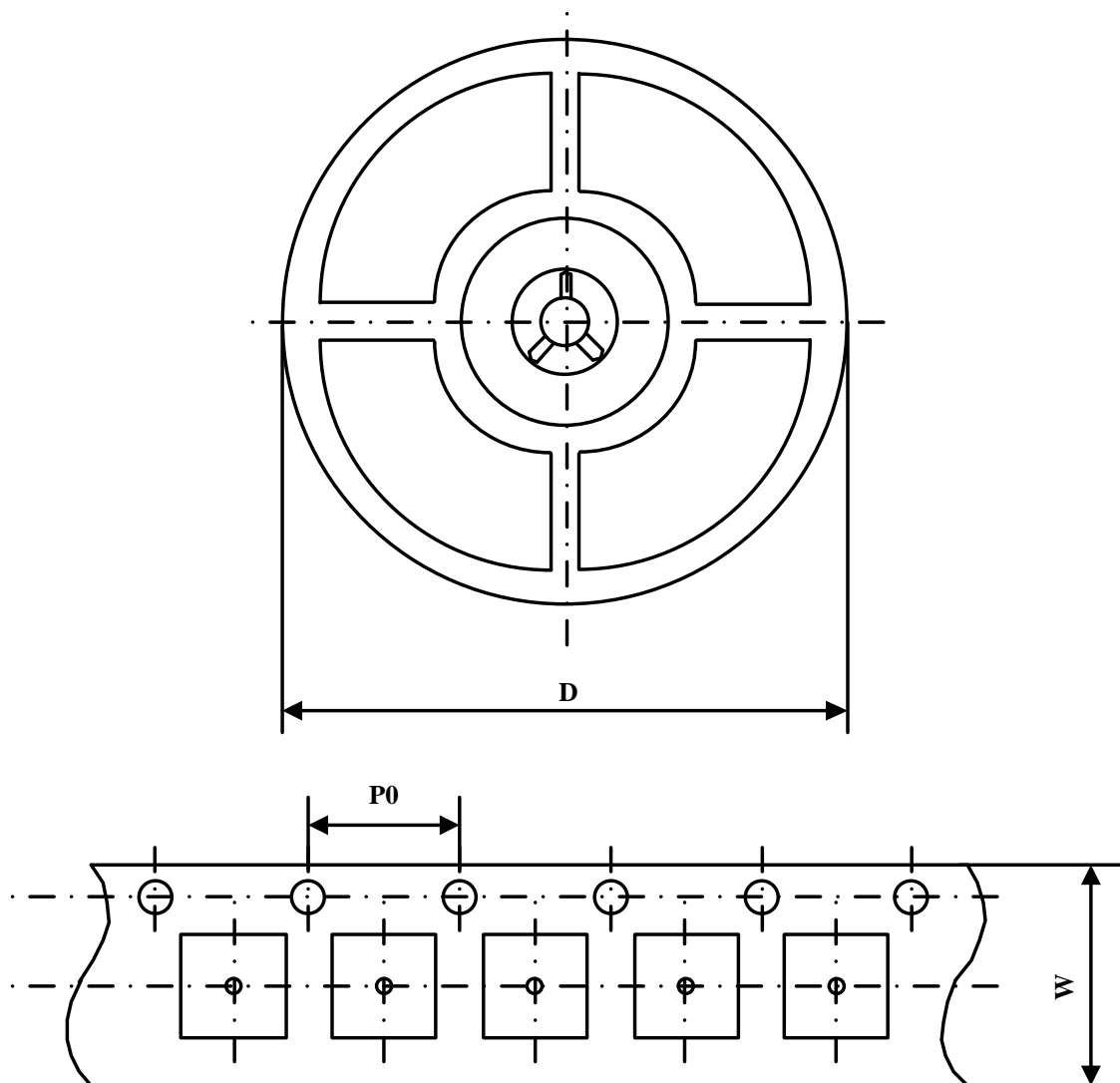


#### Land Pattern



#### Tape and Reel Orientation



**Packing Information**


Part Number	Package Type	Carrier Width(W)	Pitch(P0)	Reel Size(D)
UM13087S8	SOP8	12 mm	4 mm	330 mm

---

## **GREEN COMPLIANCE**

Union Semiconductor is committed to environmental excellence in all aspects of its operations including meeting or exceeding regulatory requirements with respect to the use of hazardous substances. Numerous successful programs have been implemented to reduce the use of hazardous substances and/or emissions.

All Union components are compliant with the RoHS directive, which helps to support customers in their compliance with environmental directives. For more green compliance information, please visit:

[http://www.union-ic.com/index.aspx?cat\\_code=RoHSDeclaration](http://www.union-ic.com/index.aspx?cat_code=RoHSDeclaration)

## **IMPORTANT NOTICE**

The information in this document has been carefully reviewed and is believed to be accurate. Nonetheless, this document is subject to change without notice. Union assumes no responsibility for any inaccuracies that may be contained in this document, and makes no commitment to update or to keep current the contained information, or to notify a person or organization of any update. Union reserves the right to make changes, at any time, in order to improve reliability, function or design and to attempt to supply the best product possible.